



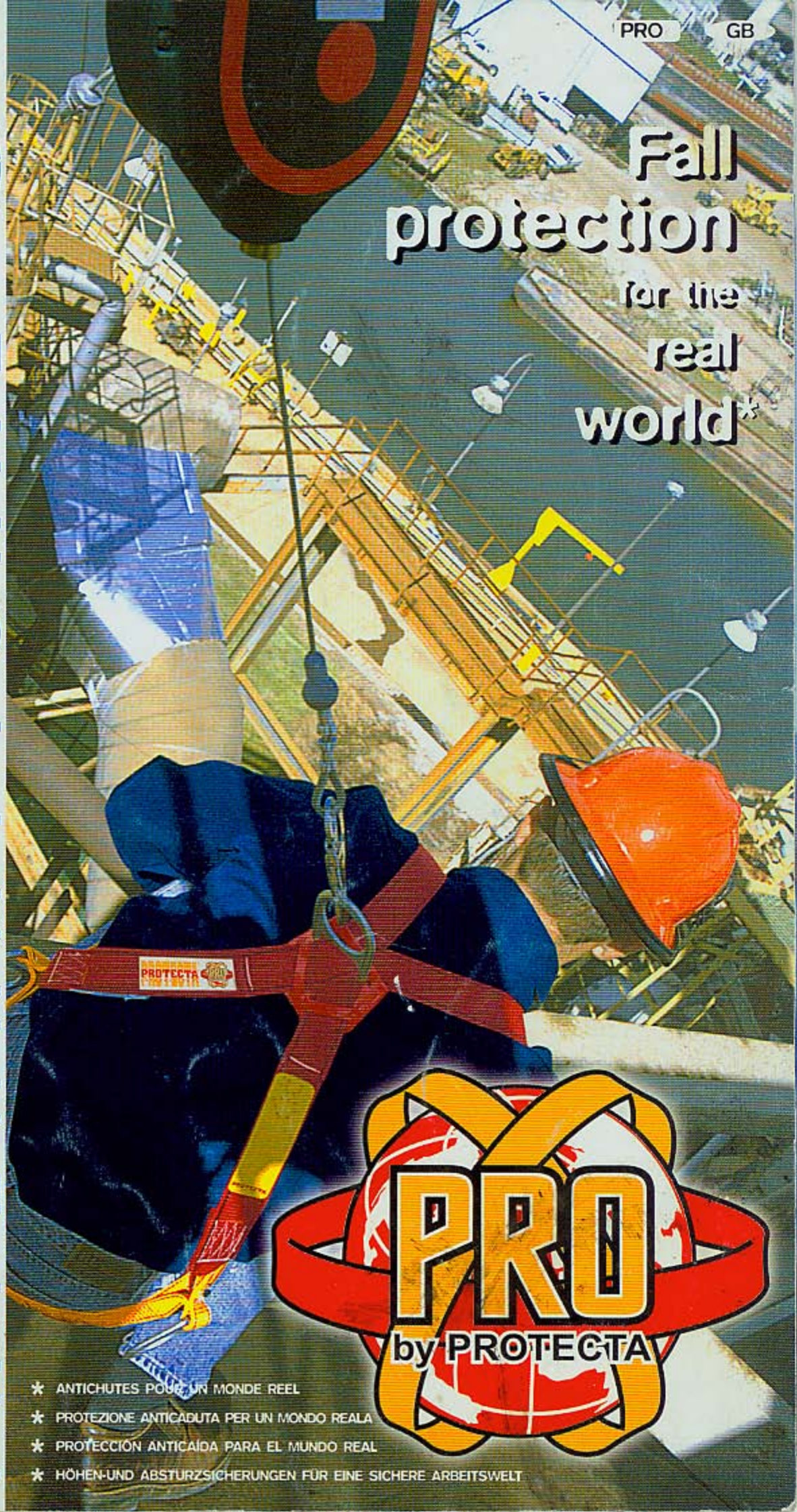
PROTECTA
INTERNATIONAL

PRO

GB

**Fall
protection**

for the
real
world*



- * ANTICHUTES POUR UN MONDE REEL
- * PROTEZIONE ANTICADUTA PER UN MONDO REALE
- * PROTECCIÓN ANTICAÍDA PARA EL MUNDO REAL
- * HÖHEN-UND ABSTURZSICHERUNGEN FÜR EINE SICHERE ARBEITSWELT

Contents

- Introduction 3
- Institutional 4 / 5
- Full body harnesses and work positioning belts 6 / 10
- Lanyards 12 / 14
- Fall arresters / Safety blocks 16 / 17
- Connectors 18 / 19
- Fall arresters on ropes 20 / 21
- Accessories 22 / 23



Introduction

PROTECTA International introduces its "PRO" range.

This range is intended for all industry, building, energy and telecommunication professionals as well as for more specialized activities such as tree trimming or work on pylons.

The "PRO" range consists of textile products like full body harnesses, work positioning belts and lanyards as well as mechanical products such as connectors or fall arrest devices.

Our new signature "Fall protection for the real world" is particularly applicable to our "PRO" range. We design, develop and test all our products with the backing of the men and women in the real field of work.



50 YEARS OF EXPERIENCE AT YOUR SERVICE

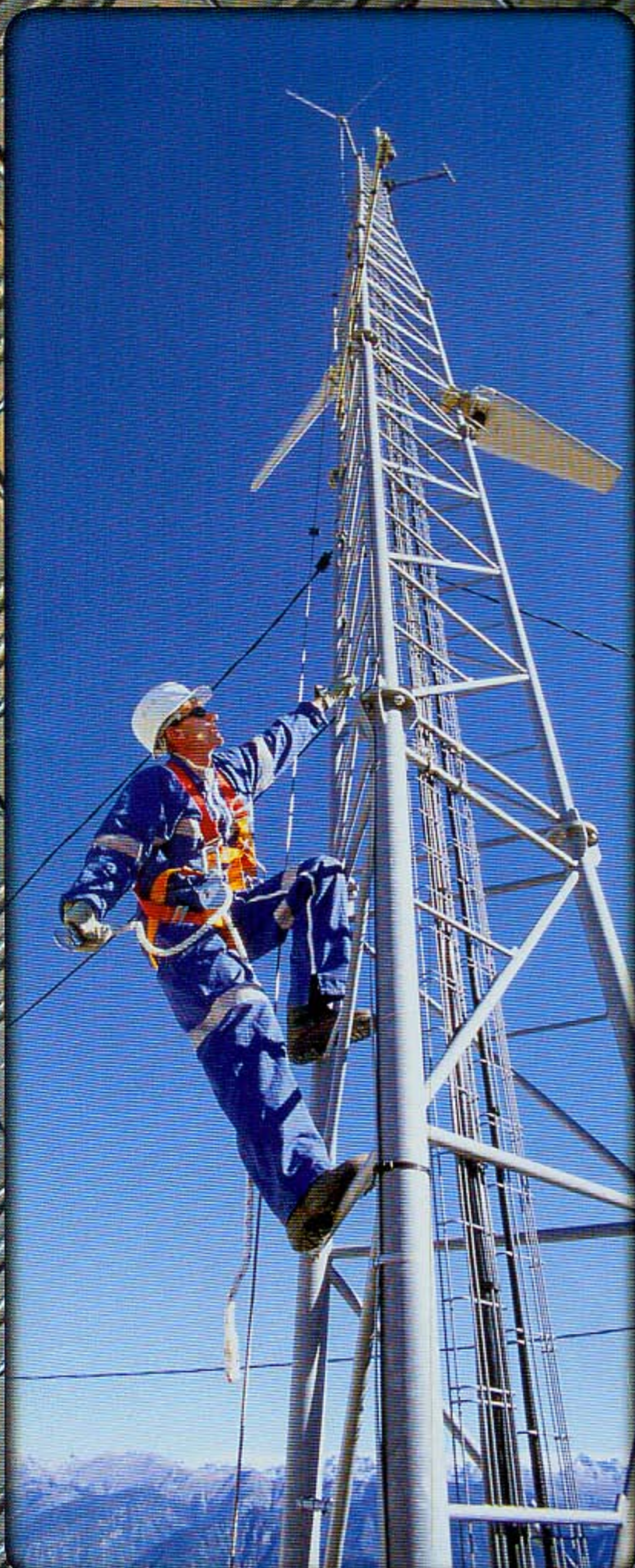
PROTECTA International is the essential partner for your safety. The success won by its various product ranges is due to the firm's professionalism and technical know-how. Our horizontal and vertical lifelines are presented in our SYSTEMS catalogue. Equipment intended for rescue and rope works are presented in our ATLAS catalogue. This is always a PROTECTA International solution tailored to your environment.

OUR PRIORITY GOAL : QUALITY

Since its foundation, PROTECTA International has always endeavoured to incorporate optimum quality research into the design and manufacture of its products.

To ensure you get optimum reliability, PROTECTA International performs daily checks at every level with the backing of its metrology and test laboratory.

Our quality assurance system, certified to the ISO 9001 references and to European Directive 89/686/CEE is constantly audited by the BSI (British Standards Institution). This quality monitoring, combined with the issue of a CEE type examination certificate, enables PROTECTA International to apply CEE markings to its entire PPE (Personal Protective Equipment) range.





PROTECTA WORLDWIDE

PROTECTA International generates more than 80% of its turnover on export into more than 70 countries. We have commercial setups in France, Great Britain, Germany, Spain, Italy, Poland, China, the USA, Australia and Canada.

A NETWORK OF PARTNERS - DISTRIBUTORS

To market its products throughout the world, PROTECTA International draws on the assistance of a network comprising more than 1,000 partners who handle the make abroad. Provided with constant training on our products, our partner-distributors add their knowledge of local markets to enrich our product supply, which has already attracted many customers on the international scale.

GLOBAL REFERENCES :

DEUTSCH TELEKOM, EDF, FRANCE TELECOM, E.N.E.L., TEPCO, GENERAL MOTORS, BOUYGUES, AIRBUS, BOEING, BUNDENPOST, EXXON, FORD, OTIS, SIEMENS, SFR, RENAULT, PEUGEOT, FIAT, GAZPROM, SCHLUMBERGER, ELF, VAG, US Department of Defence, CELCOM, MAKIS, DIGI, TM TOUCH, GLOBE TELEKOM, PETROMAS, SHELL, TOTAL, MTR, KCR, ARCELOR ...



Full body harness

PROTECTA Technology

PRO harnesses combine tradition and innovation. With the development of manufacturing processes and materials, our harnesses are at the forefront of the technology. Our materials and designs change, but we keep our identity and colors. PR1 and PR2 have become PRO 101 and PRO 102. They are still red and yellow but offer increasingly improved performance. All our harnesses comply with CE EN 361

Dorsal panel:

- + Better positioning of the dorsal D-ring.
- + Better energy absorption in the event of fall.

The new polyester straps are:

- + stronger
- + more flexible
- + better able to resist external stresses.

PROTECTA International has developed new loadbearing seams.

The elliptical seam offers:

- + Better strength because of the regularity and high density of the stitches.
- + Better comfort by reducing the stitched surface and offering better adjustment.

P seam:

this seam is registered and guarantees the quality of PROTECTA International original products.

External cordura back panel:

- + Greater rigidity
- + better resistance to abrasion.

Interior towel lining:

- + Improved comfort.
- + Perspiration absorption.

Dorsal extension strap:

Ref.: AB011

Connects to the D-ring of the dorsal panel by a knot.

Attachment D ring:

- + Specific shape to facilitate connection of a karabiner.
- + Tested individually.

High strength buckle:

- + faster and permanent adjustment.
- + Simplicity
- + Lightness
- + Safety

Sub-pelvic strap:

- + Better positioning and retention of thigh straps.
- + comfort in the event of fall

OPTIONS



The elastic webbing of the FLEXA harness offers:

- + Free movement.
- + Comfort.

Comfortable shoulder pad: boxes of 10
ref.: AK010/B10



01

01 - PRO 100 HARNESS
ref : AB100

- 1 Dorsal attachment D ring.
- Adjustment : thigh straps only.
- Net weight : 0.733 kg.



02

02 - PRO 101 HARNESS
ref : AB101

- 1 Dorsal attachment D ring.
- Adjustment : thigh and shoulder straps.
- Net weight : 1.144 kg.



03

03 - PRO 102 HARNESS
ref : AB102

- 1 Dorsal attachment D ring.
- 2 Lateral attachment D ring.
- Adjustment : thigh and shoulder straps.
- Net weight : 1.105 kg.



04

04 - PRO113 HARNESS
ref : AB113

- 1 Dorsal attachment D ring.
- 1 Sternal attachment D ring.
- Adjustment : thigh and shoulder straps.
- Net weight : 1.221 kg.



05

05 - PRO 112 HARNESS
ref : AB112

- 1 Dorsal attachment D ring.
- 2 Lateral attachment D rings.
- 1 Sternal attachment D ring.
- Adjustment : thigh and shoulder straps.
- Net weight : 1.105 kg.



06

06 - PRO "Scaffolding" HARNESS
ref : AB101/19

- 1 Dorsal attachment D ring.
- Fitted with 2 m shock absorbing lanyard, autolock karabiner 50 mm opening.
- CE EN355.
- Adjustment : thigh and shoulder straps.
- Net weight : 1.810 kg.

Harnesses and Work positioning belts

01 - PRO 134 HARNESS ref : AB101/34

- 1 Dorsal attachment D ring.
- 2 Work positioning D rings on belt.
- Adjustment : thigh and shoulder straps.
- Net weight : 1.450 kg.
- CE EN361 and CE EN358.



02 - PRO 104 HARNESS ref : AB104

- 1 Dorsal attachment D ring.
- 2 Work positioning D rings on belt.
- Back panel with 4 accessory rings.
- Adjustment : thigh and shoulder straps.
- Net weight : 1.645 kg.
- CE EN361 and CE EN358.



03 - PRO 105 HARNESS ref : AB105

- 1 Dorsal attachment D ring.
- 2 Lateral attachment D ring.
- 2 Work positioning D rings on belt.
- Back panel with 4 accessory rings.
- Adjustment : thigh and shoulder straps.
- Net weight : 1.754 kg.
- CE EN361 and CE EN358.



04 - PRO 114 HARNESS ref : AB114

- 1 Dorsal attachment D ring.
- 1 Sternal attachment D ring.
- 2 Work positioning D rings on belt.
- Back panel with 4 accessory rings.
- Adjustment : thigh and shoulder straps.
- Net weight : 1.750 kg.
- CE EN361 and CE EN358.



05 - WORK POSITIONING BELT ref : AB004

- 2 Lateral work positioning D rings.
- Padded back panel (extra wide).
- 4 accessory rings.
- Net weight : 0.660 kg.
- CE EN358.



06 - WORK POSITIONING BELT ref : AB028

- 2 Lateral ergonomic work positioning D rings.
- Padded back panel (extra wide).
- 4 accessory rings.
- Net weight : 0.660 kg.
- CE EN358.



07 - WORK POSITIONING BELT ref : AB051

- 2 Lateral ergonomic work positioning D rings.
- Padded back panel (extra wide).
- 4 accessory rings.
- 4 tool carrier.
- 2 karabiner carrier.
- Net weight : 0.705 kg.
- CE EN358.



All our belts are available with automatic buckles (consult us).
With the AK200 kit, the belts can be adapted to all our simple harnesses.

Technical harnesses



08



09

08 - PRO "ELECTRIC" HARNESS
ref : AB108

- 1 Dorsal attachment D ring.
- 1 sternal attachment via 2 loops.
- 2 Work positioning D rings on belt.
- Work positioning belt with automatic buckle.
- 180° rotation.
- Sliding shoulder straps.
- Accessory rings.
- Net weight : 1,950 kg
- C € EN361 and C € EN358.

09 - PRO "ELECTRIC" HARNESS
ref : AB118

- 1 Dorsal attachment D ring.
- 1 Sternal attachment via 2 loops.
- 2 Work positioning D rings on belt.
- Sliding elastic shoulder straps.
- Work positioning belt with automatic buckle.
- 180° rotation.
- Accessory rings.
- 2 Pulley attachment D rings.
- Comfort cushion on thigh belt.
- Net weight : 2,293 kg
- C € EN361 and C € EN358.



10



11

10 - PRO "PRUNER" HARNESS
ref : AB201

- 1 Dorsal attachment D ring.
- 2 Work positioning D rings on belt.
- 2 suspension D rings.
- Elastic sliding shoulder straps.
- Adjustment : shoulder and thigh straps.
- Ergonomic belt equipped with ventral padding.
- Rigid seat.
- Accessory carrier.
- Net weight : 2,670 kg
- C € EN361 and C € EN358.

11 - PRO "TELECOM" HARNESS
ref : AB120

- 1 Dorsal attachment D ring.
- 1 Sternal attachment D ring.
- 1 Ventral suspension D ring.
- 2 Work positioning D rings on belt.
- Padded thigh and shoulder straps.
- Padded ergonomic back panel.
- Adjustment : thigh and shoulder straps.
- Accessory rings.
- Net weight : 1,950 kg
- C € EN361 and C € EN358.



12



13

12 - PRO "RAIL" HARNESS
ref. AB105/25

- 1 Dorsal attachment D ring.
- 2 Lateral attachment D ring.
- 2 Work positioning D rings on belt.
- Work positioning belt with automatic buckle.
- Adjustment : thigh and shoulder straps.
- Net weight : 2,300 kg
- C € EN361 and C € EN358.

13 - PRO "PYLON" HARNESS
ref : AB115

- 1 Dorsal attachment D ring.
- 1 Sternal attachment D ring.
- 2 Lateral attachment D ring.
- 2 Work positioning D rings on belt.
- Adjustable work positioning belt.
- Adjustment : thigh and shoulder straps.
- Accessory rings.
- Net weight : 1,871 kg
- C € EN361 and C € EN358.

Elastic strap harness

01 - PRO 101E HARNESS ref: AB101E

- 1 Dorsal attachment D ring.
 - Adjustable elastic shoulder straps.
 - Adjustable elastic thigh straps.
 - Adjustable chest strap.
 - Net weight: 0,950 kg.
- CE EN361.



02 - PRO 102E HARNESS ref: AB102E

- 1 Dorsal attachment D ring.
 - 2 Lateral attachment D ring.
 - Adjustable elastic shoulder straps.
 - Adjustable elastic thigh straps.
 - Adjustable chest strap.
 - Net weight: 1,131 kg.
- CE EN361.



With the AK200 kit, the belts can be fitted to all our Flexa harnesses.

03 - PRO 113E HARNESS ref: AB113E

- 1 Dorsal attachment D ring.
 - 1 Sternal attachment D ring.
 - Sternal attachment loops for rescue and fall arrest.
 - Adjustable elastic shoulder straps.
 - Adjustable elastic thigh straps.
 - Adjustable chest strap.
 - Net weight: 1,153 kg
- CE EN361.



04 - PRO 135E HARNESS ref: AB103E/5

- 1 dorsal extension strap.
 - 2 loops for sternal attachment.
 - Adjustable work positioning belt with 4 accessory rings.
 - 2 Work positioning D rings on belt.
 - Elastic shoulder strap.
 - Adjustable elastic thigh straps.
 - Net weight: 1,495 kg
- CE EN361 and CE EN358





01 - ref : AE522

- Length : 2 m.
- ref : AE522/1
- Length : 1.5 m.
- With screw karabiner AJ501 17 mm opening.
- Braided rope Ø 10.5 mm.

02 - ref : AE522/3

- Length : 2 m.
- ref : AE522/13
- Length : 1.5 m.
- With autolock karabiner AJ565 19 mm opening.
- Braided rope Ø 10.5 mm.

03 - ref : AE522/5

- Length : 2 m.
- ref : AE522/15
- Length : 1.5 m.
- With autolock karabiner AJ565 19 mm opening and AJ595 50 mm opening.
- Braided rope Ø 10.5 mm.

04 - ref : AE522/6

- Length : 2 m.
- With screw karabiner AJ501 17 mm opening and karabiner AJ595 50 mm opening.
- Braided rope Ø 10.5 mm.

05 - ref : AE525

- Length : 2 m.
- Length adjustment by reducer.
- With screw karabiners AJ501 17 mm opening.
- Braided rope Ø 10.5 mm.

06 - ref : AE532/3

- Y lanyard.
- Length : 1.8 m.
- With 1 autolock karabiner AJ565 19 mm opening and 2 carabiners AJ595 50 mm opening.
- Braided rope Ø 10.5 mm.

07 - ref : AE529

- Length : 2 m.
- ref : AE529/1
- Length : 1.5 m.
- With screw karabiners AJ501 17 mm opening.
- Strap.

08 - ref : AE529/13

- Length : 1.5 m.
- ref : AE529/3
- Length : 2 m.
- With automatic karabiners AJ565 19 mm opening.
- Strap.

09 - ref : AE529E

- Extended length : 1870 mm.
- Retracted length : 1270 mm.
- With screw karabiners AJ501 17 mm opening.
- Elastic strap lanyard.





09



10



11



12



13



14



15

10 - ref : AL422

- Length : 2 m.
- Adjustment by reducer.
- Braided rope Ø 10,5 mm.

11 - ref : AL423/5

- Length : 2 m.
- Braided rope Ø 12,5 mm.
- Length adjustment by reducer.
- 1 stitched loop.
- 2 AJ565 19 mm opening.

12 - ref : AF725

- Length : 2.5 m.
- 45 mm strap, equipped with reducer and 2 karabiners AJ565 19 mm opening.
- Protection AF747 is an option.

13 - ref : AF764T2

- Length : 2 m.
- Braided rope Ø 12,5 mm equipped with MANUSTOP sliding handle and autoloc karabiner AJ565 19 mm opening.

14 - ref : AF774T2

- Length : 2 m.
- ref : AF774T3
- Length : 3 m.
- ref : AF774T4
- Length : 4 m.
- Braided rope Ø 12,5 mm equipped with MANUBLOC adjustable handle and carabiner AJ565 19 mm opening.
- Protection AF748 as an option.

15 - ref : AF795T2

- Length : 2 m.
- Braided rope Ø 12,5 mm equipped with MANUSTOP sliding handle and autolock karabiner AJ595 50 mm opening.



Standing lanyards braided rope Ø 10.5 mm

CE EN 354

01 - ref: AL410B

- Length: 1 m.
- ref: AL415B
- Length: 1.5 m.
- ref: AL420B
- Length: 2 m.
- Stitched looped ends.
- Available in bags of 5.

02 - ref: AL410C

- Length: 1 m.
- ref: AL415C
- Length: 1.5 m.
- ref: AL420C
- Length: 2 m.
- Stitched looped ends.
- Available in bags of 5.

03 - ref: AL420C1

- Length: 2 m.
- Equipped with 2 karabiners AJ565 19 mm opening.

04 - ref: AL420C2

- Length: 2 m.
- Equipped with karabiner AJ565 19 mm opening and AJ595 50 mm opening.

05 - ref: AL420C3

- Length: 2 m.
- Equipped with karabiner AJ565 19 mm opening.

06 - ref: AL420C4

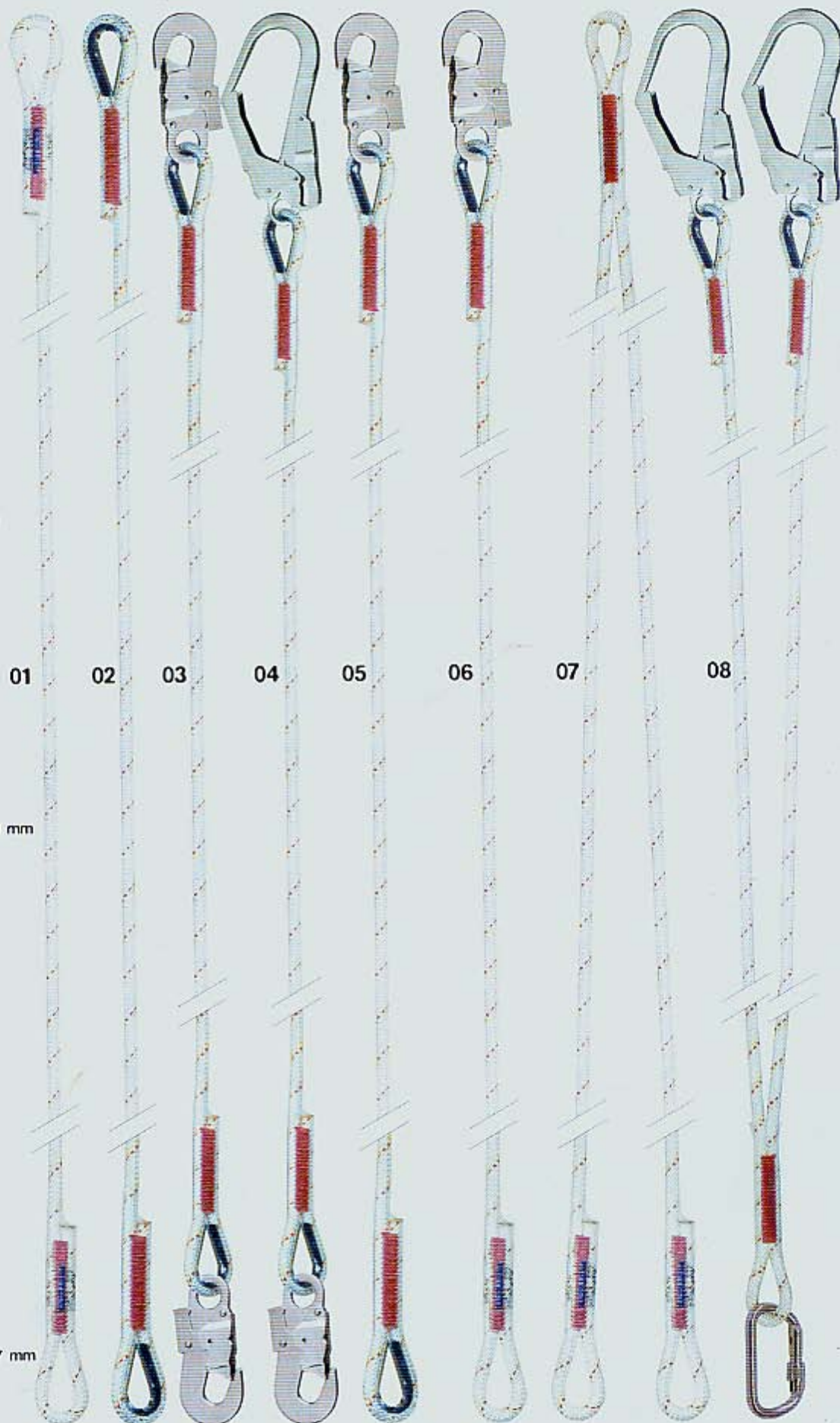
- Length: 2 m.
- Equipped with karabiner AJ565 19 mm opening.

07 - ref: AL432

- Length: 1 m.
- ref: AL132/2
- Length: 1.5 m.
- ref: AL132/3
- Length: 2 m.
- Stitched looped Y lanyard.

08 - ref: AL432/1

- Length: 1.3 m.
- Stitched looped Y lanyard.
- Equipped with karabiner AJ501 17 mm opening and 2 karabiners AJ595 50 mm opening.





Fall arresters with automatic strap return

CE EN 360

01 - AUTOBLOC ref : AD104

- Strap width : 48 mm.
- Max. length : 2.1 m.
- Weight : 1.4 kg.
- With energy dissipator.
- Available without protective casing under ref : AD102.



01

02 - I LOC ref : AD105

- Strap width : 20 mm.
- Translucent protective casing providing check of internal mechanism.
- Weight : 1,4 kg.



02

03 - JRG ref : AD107

- Strap width : 25 mm.
- Max. length : 6 m.
- Weight : 3,9 kg.



03



Fall arresters with automatic cable return

CE EN 360



01



02



03

CAUTION

Horizontal use.
Adapt the sling AM402G
at the end of the cable.



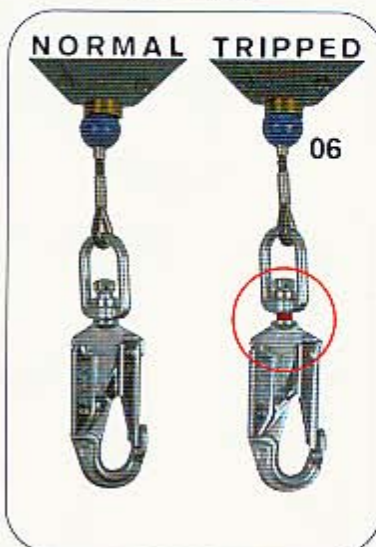
OPTION



04



05



06

01 - JRG

ref: AD212

- Galvanized steel cable Ø 4 mm.
- Max. length: 12 m.
- PP protection casing.
- Weight: 4.5 kg.
- Available with 10 m galvanized steel cable Ø 5 mm AD212/5G.
- Available with stainless steel cable Ø 5 mm AD212/5L.

02 - JRG

ref: AD215

- Galvanized steel cable Ø 4 mm.
- Max. length: 15 m.
- Composite material structure.
- Weight: 6.6 kg.
- Available with cable Ø 5 mm AD215/5G.
- Available with stainless steel cable Ø 5 mm AD215/5L.

03 - JRG

ref: AD220

- Galvanized steel cable Ø 4 mm.
- Max. length: 20 m.
- Structure of composite material.
- Weight: 9 kg.
- Available with cable Ø 5 mm AD220/5G.
- Available with stainless steel cable AD220/5L and aramide rope AD220/R.

ref: AD225 - AD230

- Galvanized steel cable Ø 4 mm.
- Max. length: 25 m or 30 m depending on reference.
- Structure of composite material.
- Weight: 9 kg (25 m) or 11 kg (30 m).
- Available with stainless steel cable Ø 5 mm AD225/5L.

04 - JRG

ref: AD340 - AD350 - AD360

- Galvanized steel cable Ø 4 mm.
- Max. length: 40 m, 50 m or 60 m.
- Protection steel casing.
- Weight: 17.8 kg, 25 kg or 36 kg.
- Available in length of 34 m with stainless steel cable Ø 5 mm AD334/5L.
- Available in length of 52 m with stainless steel cable Ø 5 mm AD352/5L.
- Available in length of 60 m with stainless steel cable Ø 5 mm AD360/5L.

05 - TIRVIT

ref: AK150

Cable recovery system for JRG fall arrester.

06 - FALL INDICATOR carabiner

ref: AJ573

- Material: zinc-plated steel.
- Tripping threshold: 2 kN.
- Adaptable on order on our JRG fall arresters.

Connectors

01 - ref : AJ501

- Material : zinc-plated steel.
 - Screw locking.
 - Opening : 17 mm.
 - Strength > 25 kN.
 - Weight : 170 g.
 - Available in boxes of 20.
- CE EN 362.



02 - ref : AJ514

- Material : zinc-plated steel.
 - Autolock closure 1/4 turn type.
 - Opening : 17 mm.
 - Strength > 25 kN.
 - Weight : 170 g.
 - Available in boxes of 20.
- CE EN 362.



03 - ref : AJ520

- Material : aluminum alloy.
 - Screw locking.
 - Opening : 15.5 mm.
 - Strength > 20 kN.
 - Weight : 70 g.
- CE EN 362.

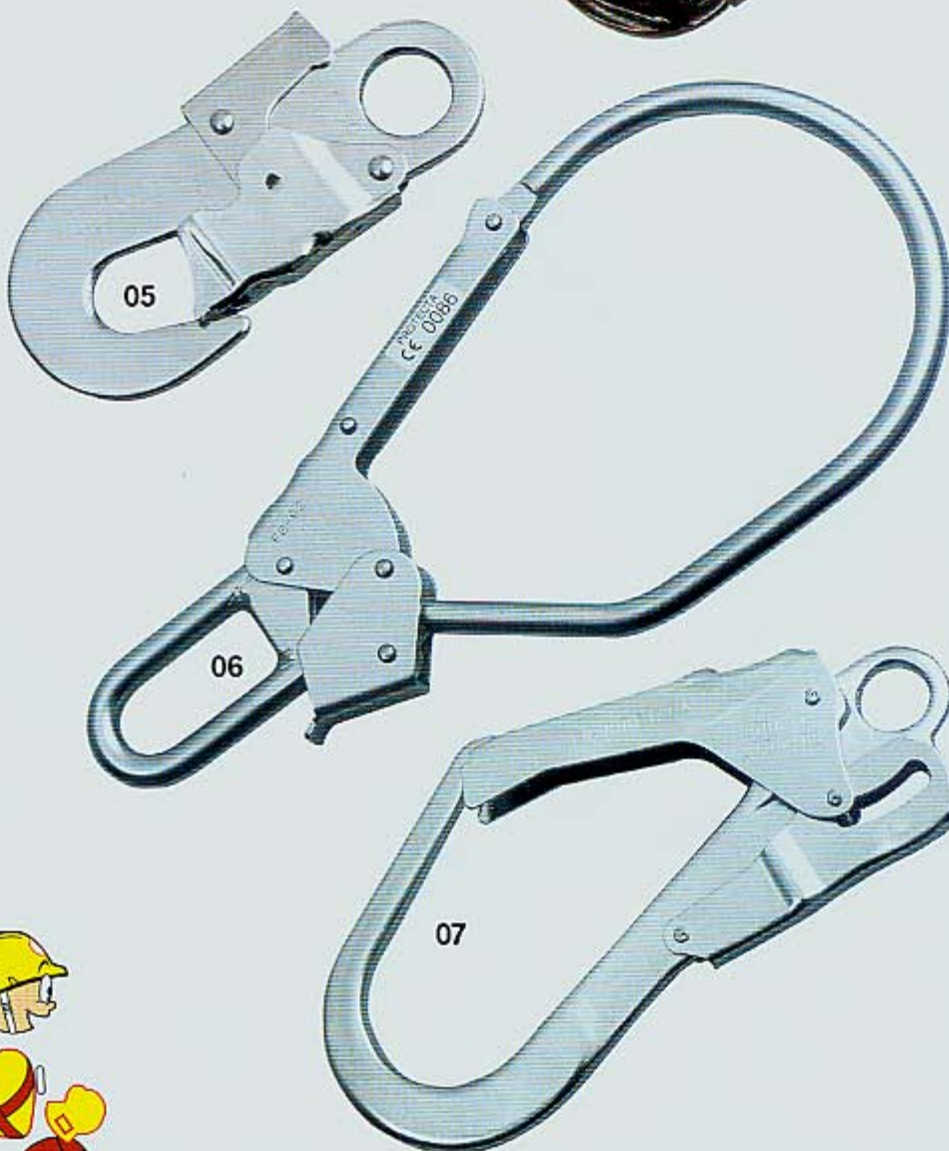
04 - ref : AJ521

- Material : aluminum alloy.
 - Autolock closure 1/4 turn type.
 - Opening : 17 mm.
 - Strength > 20 kN.
 - Weight : 80 g.
- CE EN 362.



05 - ref : AJ565

- Material : zinc-plated steel.
 - Autolock closure.
 - Opening : 19 mm.
 - Strength > 23 kN.
 - Weight : 210 g.
- CE EN 362.



06 - ref : AJ592

- Material : nickel-plated steel.
 - Double lock closure.
 - Opening : 85 mm.
 - Strength > 18 kN.
 - Weight : 835 g.
- CE EN 362.

07 - ref : AJ595

- Material : zinc-plated steel.
 - Autolock closure.
 - Opening : 50 mm.
 - Strength > 23 kN.
 - Weight : 510 g.
- CE EN 362.

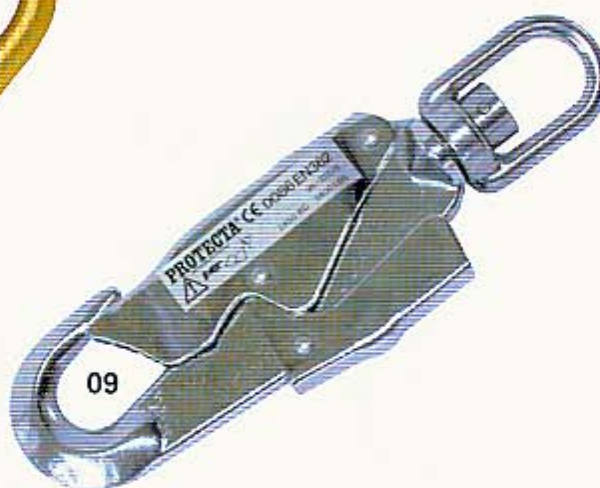
ref : AJ597

- Material : steel.
 - Autolock closure.
 - Opening : 65 mm.
 - Strength > 23 kN.
 - Weight : 605 g.
- CE EN 362.





08



09

08 - ref : AJ593

- Material : bichromate steel
- Autolock closure.
- Opening : 50 mm.
- Strength > 25 kN.
- Weight : 660 g.
- CE EN 362.

09 - ref : AJ571

- Material : zinc-plated steel.
- Autolock closure.
- Opening : 19 mm.
- Strength > 23 kN.
- Weight : 325 g.
- CE EN 362.

10 - ref : AJ510

- Material : aluminum alloy.
- Screw closure.
- Opening : 20 mm.
- Strength > 22 kN.
- Weight : 165 g.
- CE EN 362.

11 - MANUCROCHE

- Material : stainless steel
- Strength > 24,5 kN.
- Available with opening of : 75 mm, 110 mm, 140 mm.
- ref : AJ301 ; AJ302 ; AJ303.
- Weight : 290 g ; 345 g ; 380 g.
- CE EN 362.

12 - ref : AJ573

- Material : zinc-plated steel.
- Strength > 22,2 kN
- Opening of : 19 mm
- Fall indicator
- Weight : 410 g
- CE EN 362.

13 - ref : AJ502

- Quick stainless steel link
- Opening : 10 mm.
- Weight : 77 g.
- WLL : 700 kg.
- Breaking strength : 35 kN.
- CE for lifting.

14 - ref : AJ507

- Quick steel link.
- Opening : 17 mm.
- Weight : 60 g.
- WLL : 500 kg.
- Breaking strength : 25 kN.
- CE for lifting.

15 - ref : AJ508

- Delta steel quick link.
- Opening : 10 mm.
- Weight : 85 g
- WLL : 550 kg.
- Breaking strength : 27 kN.
- CE for lifting.

16 - ref : AJ509

- Stainless steel delta quick link.
- Opening : 8 mm.
- Weight : 40 g.
- WLL : 450 kg.
- Breaking strength : 12 kN.
- CE for lifting.

Quick links



13



14



15



16

Guided fall arrester on twisted rope CE EN 353-2

COBRA

Works :

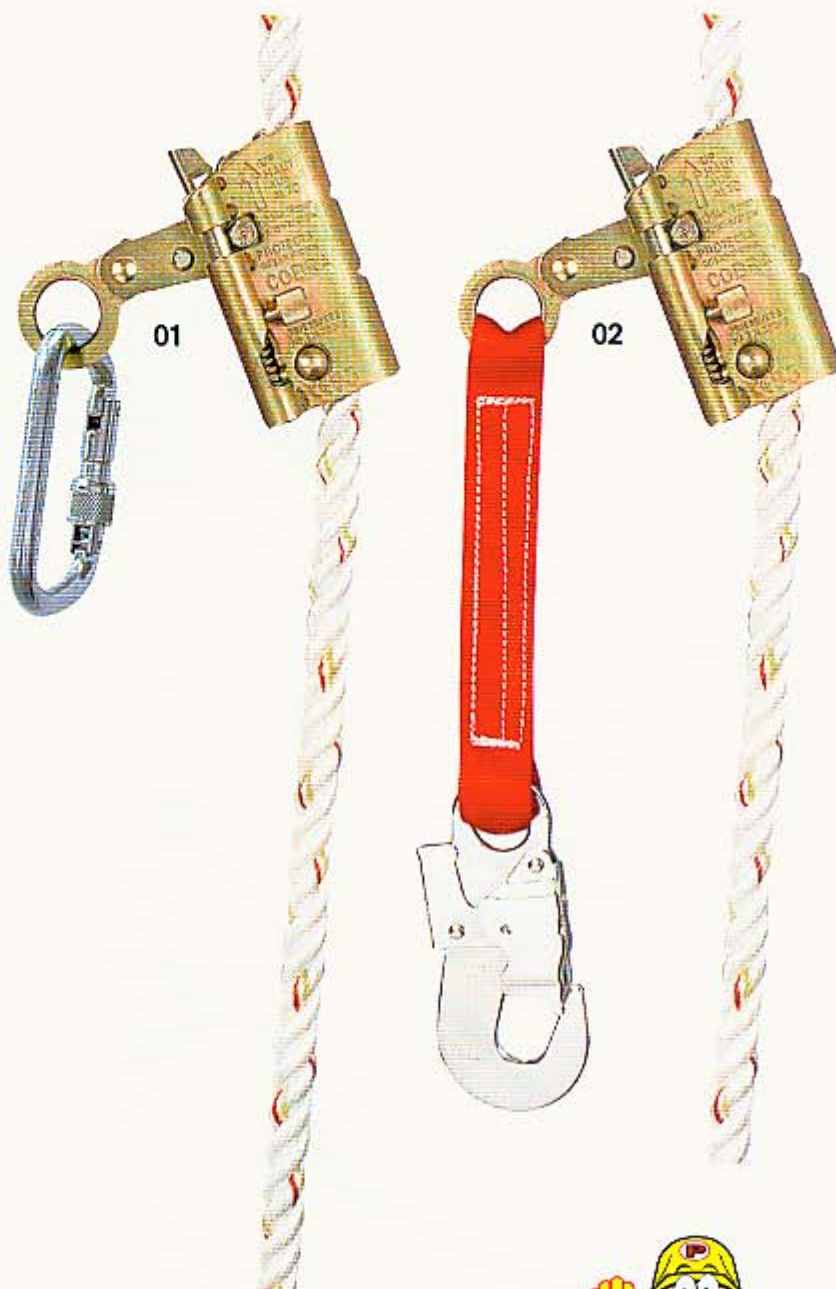
- On twisted rope Ø 12 mm
- On twisted rope Ø 14 mm

01 - ref : AC202/01

- Equipped with screw karabiner AJ501.
- Automatic locking.
- Possibility of immobilization on rope by manual locking.
- Weight : 0.980 kg.

02 - ref : AC202/03

- Equipped with autolock karabiner AJ565 and strap 20 cm.
- Automatic locking.
- Possibility of immobilization on rope by manual locking.
- Weight : 1.050 kg.



LOCKED POSITION



AUTOMATIC POSITION



Length :	Twisted rope 12 mm		Twisted rope 14 mm	
End connector	AJ501	AJ565	AJ501	AJ565
5 m	AC205B	AC205B/1	AC205	AC205/1
10 m	AC210B	AC210B/1	AC210	AC210/1
15 m	AC215B	AC215B/1	AC215	AC215/1
20 m	AC220B	AC220B/1	AC220	AC220/1
25 m	AC225B	AC225B/1	AC225	AC225/1
30 m	AC230B	AC230B/1	AC230	AC230/1
40 m	AC240B	AC240B/1	AC240	AC240/1
50 m	AC250B	AC250B/1	AC250	AC250/1

Consult for greater lengths

CAUTION

The COBRA and VIPER system ropes must be connected to an anchorage point with strength greater than 10 kN or preferably to a structural purpose built anchor (EN795A)

Guided fall arrester on braided rope CE EN 353-2 VIPER

Works

- On braided rope $\varnothing 10.5 \text{ mm}$



03



04

- 03 - ref : AC400
- Equipped with screw karabiner AJ501.
 - Weight : 0.600 kg.

The innovative locking design of the VIPER provides the user with total safety (conforming to EN 353-2) with compact and particularly easy to use equipment.

- 04 - ref : AC401
- Equipped with a karabiner AJ501, an autolock karabiner AJ565 and a strap.
 - Weight : 0.840 kg.

- 05 - ref : AC401/1
- Strap equipped with karabiners AJ565 and AJ501.
 - Total length : 38 cm.

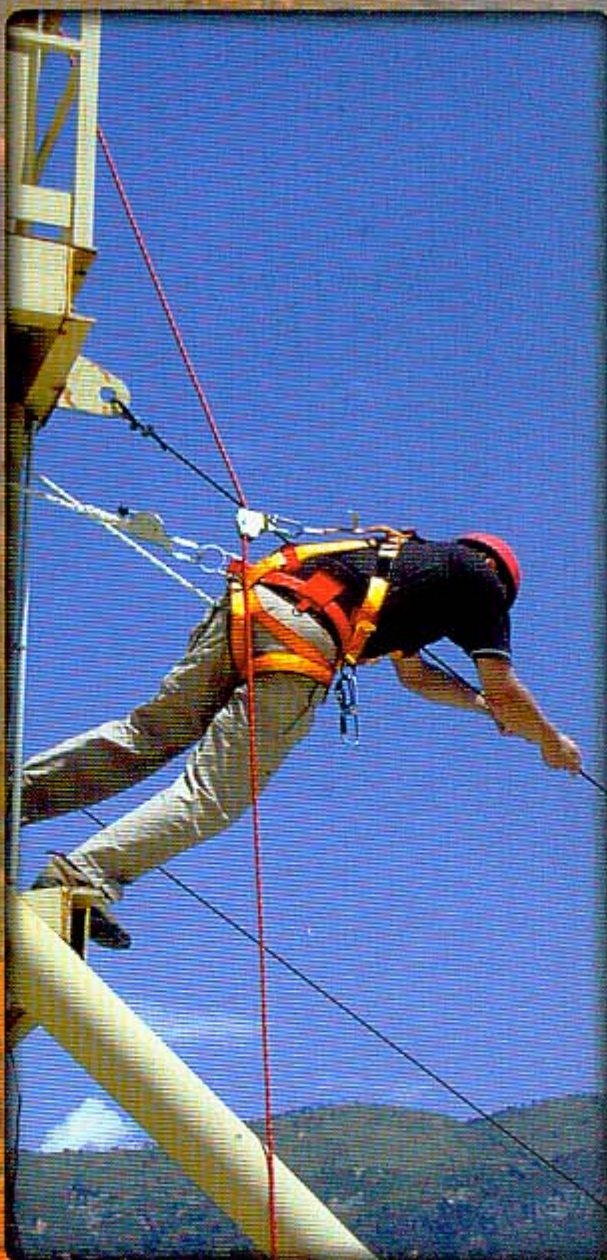
OPEN POSITION



05

Length	Braided rope 10.5 mm	
End connector	AJ501	AJ565
5 m	AC405	AC405/1
10 m	AC410	AC410/1
15 m	AC415	AC415/1
20 m	AC420	AC420/1
25 m	AC425	AC425/1
30 m	AC430	AC430/1
40 m	AC440	AC440/1
50 m	AC450	AC450/1

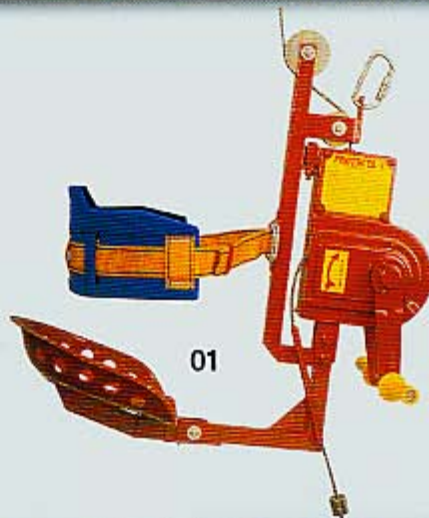
Consult us for greater lengths



Ouistiti

01 - WORKING SADDLE ref: AH600

- The "Ouistiti" working saddle is a personal access system that is compact, light and easy to carry.
 - Designed for use whenever it is impossible or too costly to use a cradle or scaffolding.
 - Practical for maintenance, inspection, cleaning and painting jobs, etc.
 - Automatic locking system.
 - Length of cable: 10 to 50 m under ref.: AH6xx
 - Max. capacity: 136 kg.
 - Footrest AH602 and rigid backrest AH601 available as an option.
 - To be used with 1 fall arrester.
 - Weight: 16 kg.
- Machine directive 89/392/CEE.



Guided anchorage system

01 - MOBILE TRIPOD ref: AM100

- Anchorage points: 4.
 - Marking stripe under each foot.
 - 8 height adjustment positions from 1.35 m to 2.35 m.
 - Max. permissible load: 500 kg.
 - Weight: 14.5 kg.
- CE EN795 class B.

02 - PULLEY ref: AT052/1

- Return pulley adapting to beneath height of tripod AM100.
- Steel pulley designed to take up rescue winch and winch fall arrester cable returns marketed by PROTECTA.
- Housing: steel.
 - Weight: 92 g.
 - For cable max. dia. 5 mm

03 - MANUCLAVE ref: AM201

- Mobile anchorage point particularly suitable for metallic structures.
 - Ultra-fast implementation.
 - Horizontal or vertical use.
 - Strength > 10 kN.
 - Diameter of hole between 20 and 22 mm.
 - Weight: 650 g.
- CE EN795 class B.

04 - HARIP SYSTEM ref: AN410 ref: AN420

- Adjustable life line.
- Twisted rope Ø 14 mm.
- Lengths: 10 m and 20 m.
- Weight: 0.465 kg.
- CE EN 795 class C



Bags

01



02



03



04



01 - DUFFEL BAG
ref : AK043
- Ø 300 x 500 mm.

02 - TOOL CARRIER BAG
ref : AK044
- 240 x 80 x 320 mm.

03 - BELT BAG
ref : AK049
- 320 x 90 mm x 170 mm.

05



04 - TRANSPORT BAG
ref : AK066
- Of PVC for rope and system.
- 350 x 200 x 200 mm.

05 - STORAGE CASE
ref : AK041
- 500 x 125 x 370 mm.
- Material : Plastic.

05 - CONNECTION BOOM
ref : AP106

- Length : telescopic up to 6 m.
- Material : fiberglass.
- Provided with hook for connecting the AP 168 connector.
- Weight : 2.3 kg.
- To be used with the AP168 connector for rapid implementation of your fall arrest system.

06 - CONNECTOR FOR BOOM
ref : AP168

- Weight : 0.465 kg.
- Strength > 19 kN
- CE EN 795 class B.

07 - SLING
ref : AM401G

- Length 1 m.
- Steel cable Ø 6 mm.
- Strength > 20 kN.
- Protection sheath.
- Weight : 220 g.
- Available in 2 m lengths under ref. AM402G.
- CE EN 759 class B.

08 - STRAP RINGS
ref : AM450/80
ref : AM450/150

- Lengths : 0.8 m - 1.5 m.
- Strap 25 mm.
- CE EN 795 class B.

06



06 - DUFFEL TYPE BACK-
PACK
ref : AG6800621
Bag 45 L.
ref : AG6800622
Bag 68 L.

- Storage backpack for ropes and accessories with two adjustable shoulder-straps.
- Closure by rigid rod and plastic clip to ensure relative tightness.

07 - STORAGE BOX

Tough and light aluminum box, practical for storing ropes and bulky accessories
Available in 6 sizes :

AG6800652 350X250X310
AG6800653 550X350X220
AG6800654 550X350X310
AG6800655 550X350X380
AG6800656 750X550X380
AG6800657 850X450X350

07



08 - TRIPOD CARRIER BAG
ref : AK0100

- PVC coated fabric backpack for tripod AM100.
- quick closing by Velcro.

08

