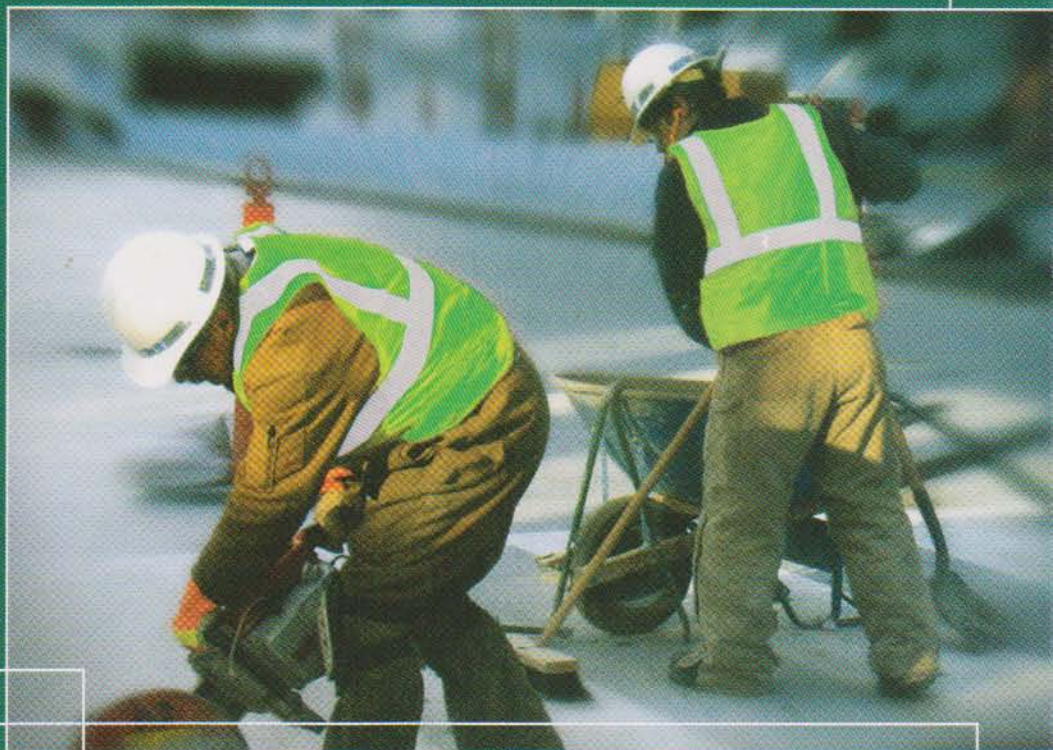


3M Scotchlite™ Reflective Material

Visibility Vest



We make

People Visible

3M Scotchlite™
Reflective Material

3M™ Scotchlite™ Reflective Material is recognized as the leading high performance retroreflective material for enhancing visibility.

Whether at work or play, 3M™ Scotchlite™ Reflective Material brand provides increased peace-of-mind to people who wear them. They know that their garment contains material that will enhance their visibility in day time, low-light and nighttime conditions. And they value that their reflective material comes from 3M, a trusted name known for quality and innovation.



- 3M™ Scotchlite™ reflective strips exceeds the stringent requirements of EN471:1994 European Standard for...**High Visibility Warning Clothing**
- Fluorescent coloured base fabric...**Excellent daytime visibility**
- 3M™ Scotchlite™ reflective strips - 1500 times brighter than white clothing at night (typical brightness 500CPL)...**Superior nighttime visibility**
- 360° placement of reflective strip...**Visible from all direction**
- Lightweight...**Greater user comfort**
- Backed by comprehensive product data sheets, wash profile guidelines and test reports from accredited test houses.

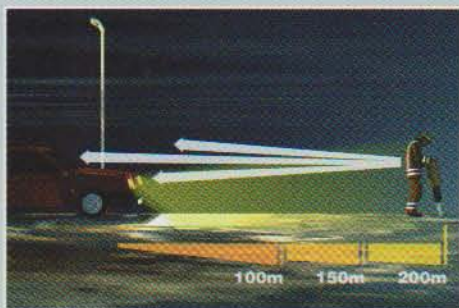


3M High Visibility Vest

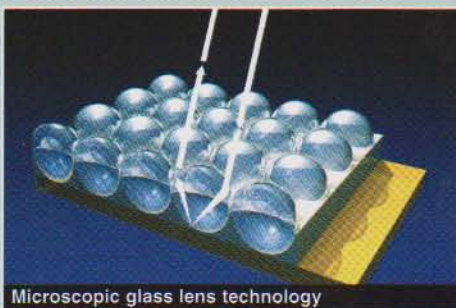


3M Hi-Lo Vest

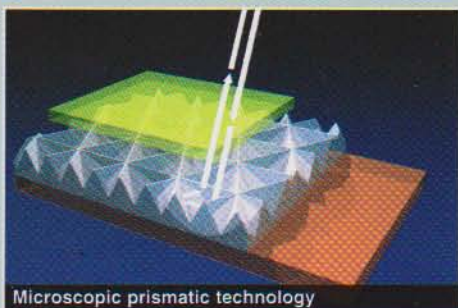
- An experienced technical service organisation with laboratory and research back-up for testing materials and garments to all relevant standards.
- 3M™ Scotchlite™ is manufactured in facilities operating to ISO9002 standards from a company that makes environmental performance a priority.



The importance of nighttime visibility is evident in the time it takes drivers to identify and respond to a pedestrian. Drivers moving at just 50km/h require over 150 metres to manoeuvre their cars in response to an obstacle. Yet a pedestrian wearing a white shirt isn't visible to drivers until they are within well under 100 metres of the car.



Microscopic glass lens technology



Microscopic prismatic technology

By reflected light back to it's source, 3M™ Scotchlite™ Reflective Material produce a brilliant image in the headlights of approaching vehicles.

Glass lens fabric/film

High gloss prismatic

| | | 8910 | 8925 | 8710 | 8725 | 9910 | 8935 | 9486/7 | 8986/87 | 8965 | 8711 | 9920 | 6160 | 6186R | 6187R | 6260 |
|------------------------|--|------|------|------|------|------|------|--------|---------|------|------|------|------|-------|-------|------|
| MHA Class 2 Brightness | | • | • | • | • | • | • | • | | | • | • | • | • | • | • |
| Washing 60°C | | • | • | • | • | • | • | • | • | • | • | • | • | • | • | • |
| Washing 90°C | | | • | | | • | | • | | | | • | | | | |
| Industrial Wash | | | | | | • | | | | | | • | | | | |
| Rain Performance | | • | • | • | • | • | • | • | • | • | • | • | • | • | • | • |
| Flame Retardant | | | | | | | • | • | • | | | | | | | |
| Dry Clean/Iron | | • | • | • | • | • | • | • | • | • | • | • | | | | |
| Tumble Dry | | • | • | • | • | • | • | • | • | • | • | • | | | | |